

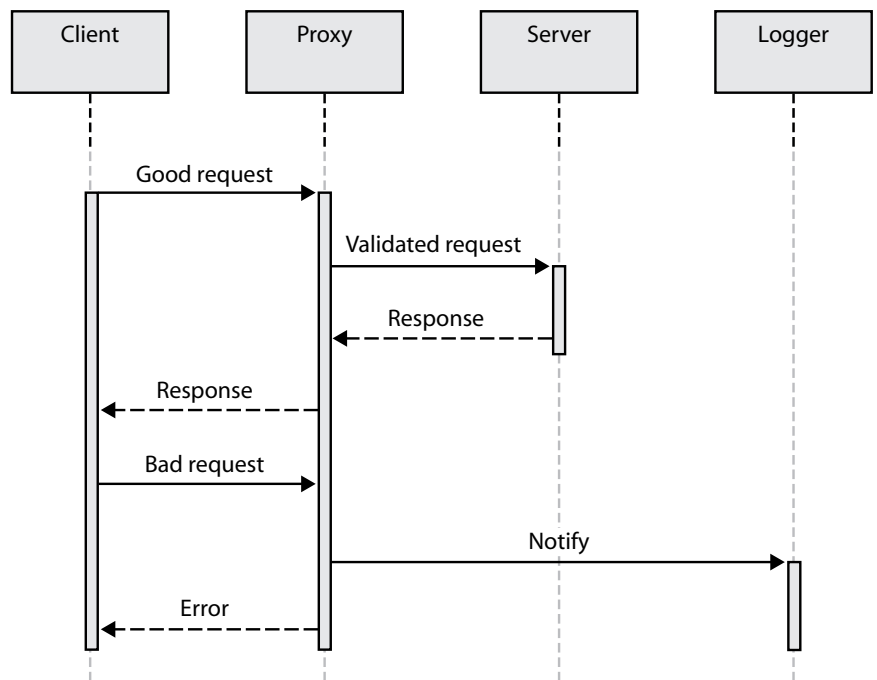
## Topologi Validating Proxy

### Test and validate Web Services data

- Prevent database corruption
- Check business rules
- Sample, prove or verify XML-over-HTTP requests
- Offload processing from middleware or server systems

### Operation

- Proxy sits transparently between clients and servers
- Validates incoming XML-over-HTTP requests
- Wide range of options for handling errors: rejection, logging, on-sending, transforming
- Request data uncompressed but not augmented or changed; response data passed back to client unchanged
- Configuration by XML file: no programming required



### W3C XML Schemas

The W3C XML Schema language allows powerful validation and range-checking of datatypes and the required tree structures of a document. However, by themselves they are not powerful enough to perform the validation necessary for gatekeeping, quality assurance and testing.

### Schematron

The Schematron language allows validation of more complex constraints than XML Schemas. These range from simple value-to-structure document constraints, such as If the country attribute is "USA" there should be a ZIP code attribute to more complex architectural rules, such as The value of the <partNumber> element should be one of the values listed in file "eg.xml", and even to basic business rules, such as In these applications, only one <applicant> element should have the attribute main with a value "true".

We are tracking the ISO DSDL standard under development for Schematron and RELAX NG.

### Web Services

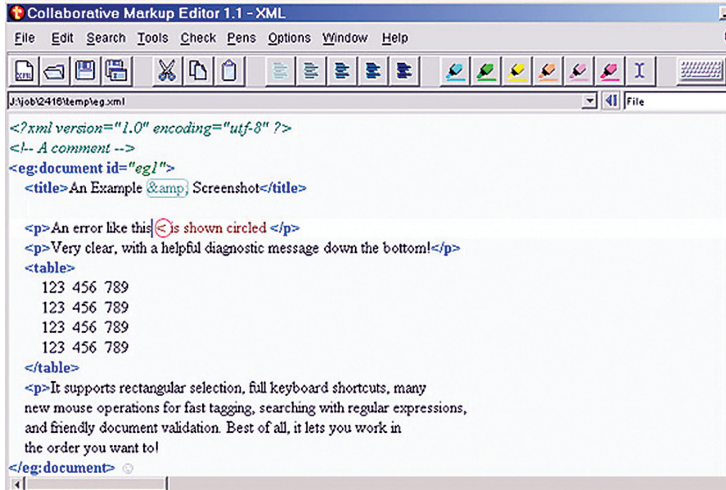
The Topologi Validating Proxy (TVP) is a non-intrusive, simple and convenient way to provide a gatekeeper for your web services, such as SOAP-based systems. It is simple to configure the TVP using a WSDL definition.

### Requirements

TVP is a Java servlet suitable for running on recent Apache webserver, with Java 1.3.1 or beyond and the latest Apache Xerces and Xalan. Can be ported to other Java web servers or customized on request. TVP is distributed as a WAR (Web Application Archive).

## Other Topologi Products

Topologi is a leading supplier of products for XML quality assurance and validation. We have extensive experience in the development of infrastructure-level tool development such as the following:

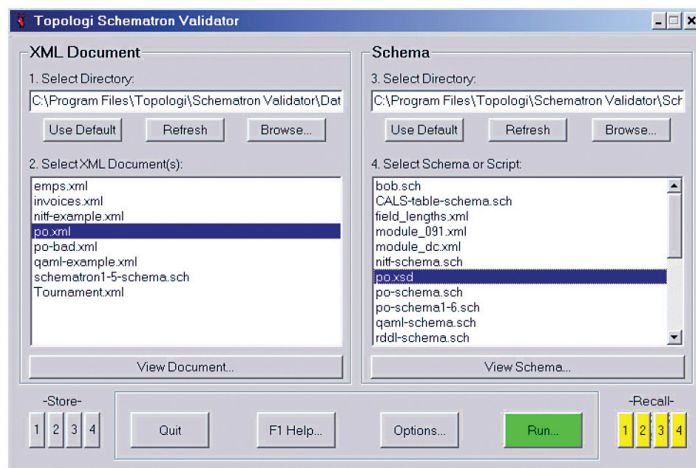
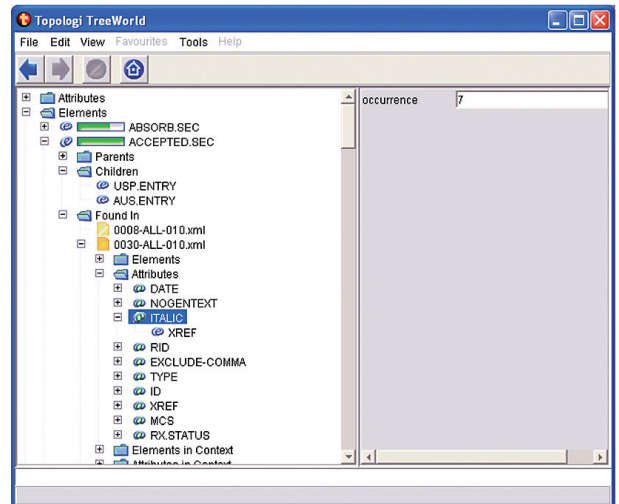


### Topologi Collaborative Markup Editor

The Topologi Collaborative Markup Editor (TME) is the tool of choice for teams and individuals marking up text. It supports no-fuss markup and editing at all stages of document processing life from raw or partially marked text all the way to data validated through Schematron schemas for assured quality. TME is a unique solution for demanding XML and SGML projects.

### Topologi Reporter

Be in control! Generate element usage and validation reports for documents, and navigate naturally through the reports. Sample and create schemas automatically. Detect anomolous documents. Essential for scoping development requirements. Java platform. Available standalone or as browser/server.



### Topologi Schematron Validator

Check or Double-check! Free tool for Windows. Drag-and-drop validation all major schema languages.